

About Us

QuasyTech is your trusted partner in precision engineering and quality assurance. We provide ISO/IEC 17025-accredited on-site calibrations, dimensional inspections, reverse engineering, and automation solutions across North America.

With over a decade of experience, our team delivers seamless, cost-effective services that keep your operations compliant, efficient, and ahead of industry standards. From gauge and fixture calibrations to 3D scanning, part inspections, and turnkey automation, we act as an extension of your quality department—reducing downtime, ensuring accuracy, and supporting your growth.

Contact Us

Telephone

+1-905-962-9830

+1-226-899-3807

Address

806 Robert Ferrie Dr.,
Kitchener, ON N2R 0B9

Website

www.quasytech.com

Email

sales@quasytech.com

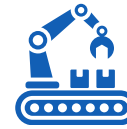
bhargav@quasytech.com

nikhav@quasytech.com



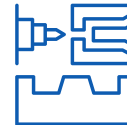
DIMENSIONAL METROLOGY & CALIBRATIONS

On-site Certified Services



AUTOMATION

Leading Global solutions



MANUFACTURING

Molding, 3D Printing,
Custom manufacturing

QUASYTECH

Quality systems technology

**QUALITY
AUTOMATION
MANUFACTURING
CONSULTATION**

ISO/IEC 17025-2017
Accredited



QUASYTECH CALIBRATIONS

Certified - On-site Calibration services with clear tracking and management

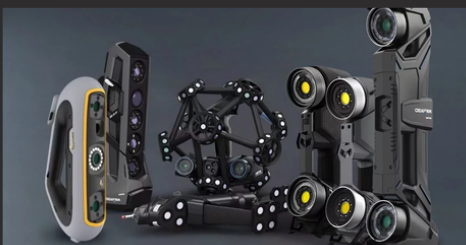
ISO/IEC 17025-2017



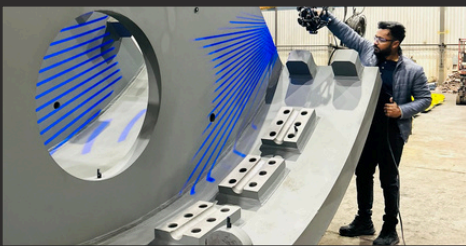
Equipment and tools



AACMM & Scanner Calibrations



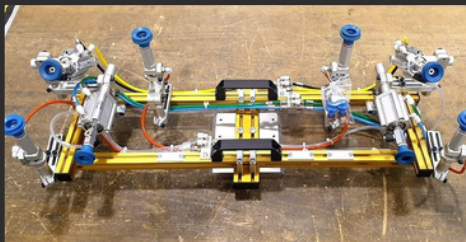
Inspections & Calibrations



QUASYTECH AUTOMATION

Tailor-Made Automation Solutions
Powered by a Global Engineering Network

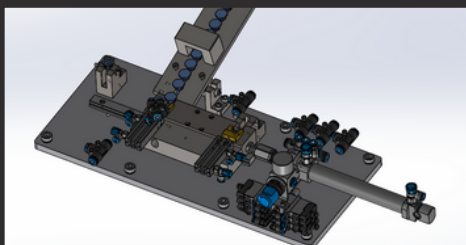
End Of Arm Tooling



Conveyors



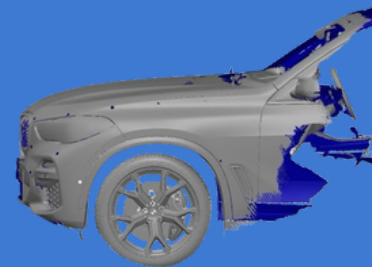
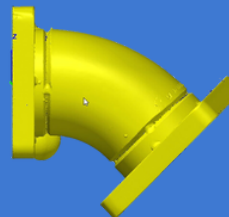
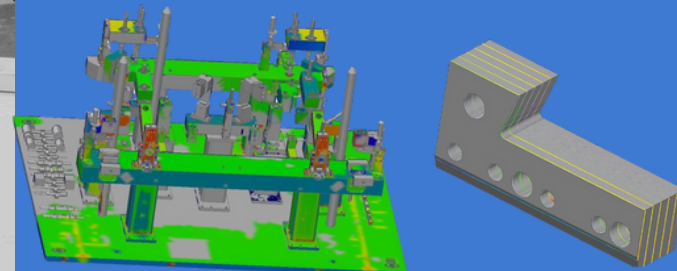
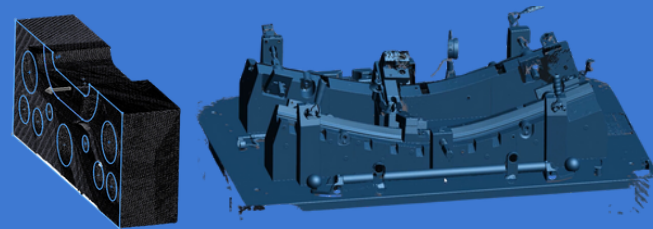
Assembly Fixtures



Automation metrology



Components serviced



Trim and Dash

Bumpers/Fascias

Fuel Tanks

Air Intake comps.

Radiator

Wiring harness

Door handles & trim

Sunroofs/Moonroofs

Head/Tail lights

Sub-frames

Exhaust systems

Chassis Comps.

Engine Comps.

Seat Assy.

Suspension Assy.

Transmissions

Drive-train

Body panel/Frame

Doors